



TIMING BARS

POLY CHAIN GT[®] TIMING BARS	page 4
TIMING BARS FOR POSITIVE BELTS	5
HTD[®] TIMING BARS	8
GT[®] TIMING BARS	10
METRIC TIMING BARS FOR METRIC BELTS "T"	12
METRIC TIMING BARS "CT" FOR METRIC BELTS "AT"	15

FLANGES FOR PULLEYS

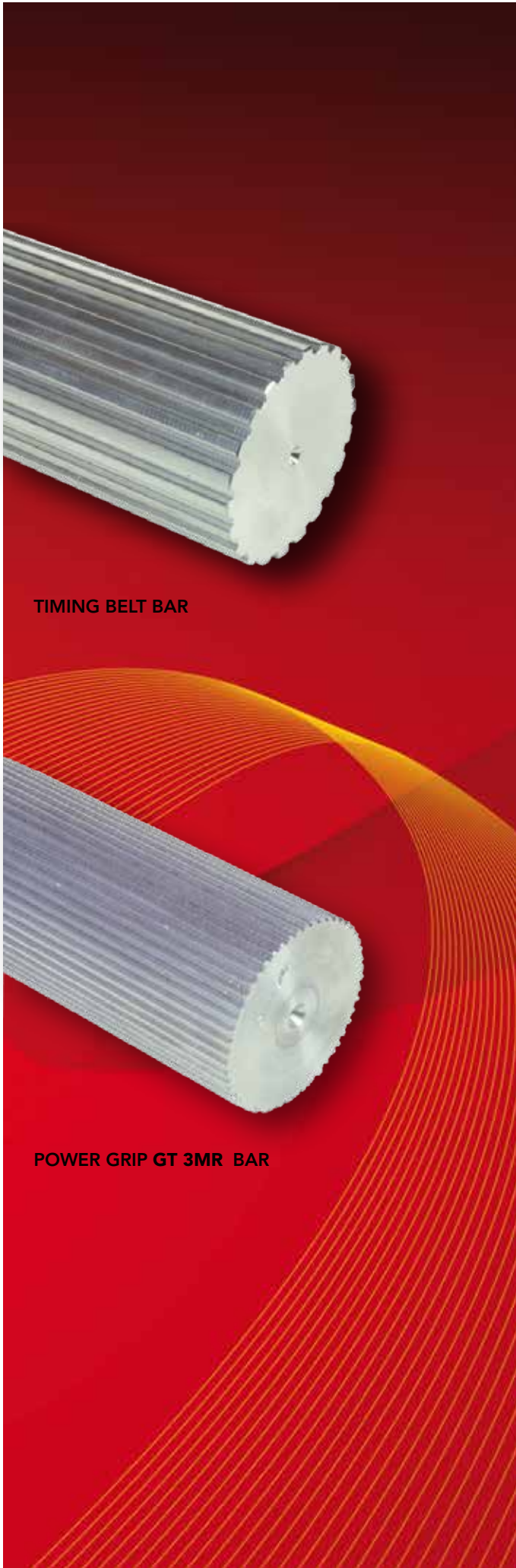
FLANGES FOR PULLEYS	19
FLANGES SIZES	
Thickness 0,5 mm	20
Thickness 1 mm	20
Thickness 1,5 mm	21
Thickness 2,5 mm	21

CLAMPING BELTS PLATES

PLATE FOR TIMING BELT POWERGRIP[®] POSITIVE	26
PLATE FOR TIMING BELT POWERGRIP[®] HTD[®]	27
PLATE FOR TIMING BELT METRIC PITCH "T"	28
PLATE FOR TIMING BELT METRIC PITCH "AT"	29



TIMING BELT BARS



TIMING BELT BAR

POWER GRIP GT 3MR BAR



TIMING BELT BAR XL



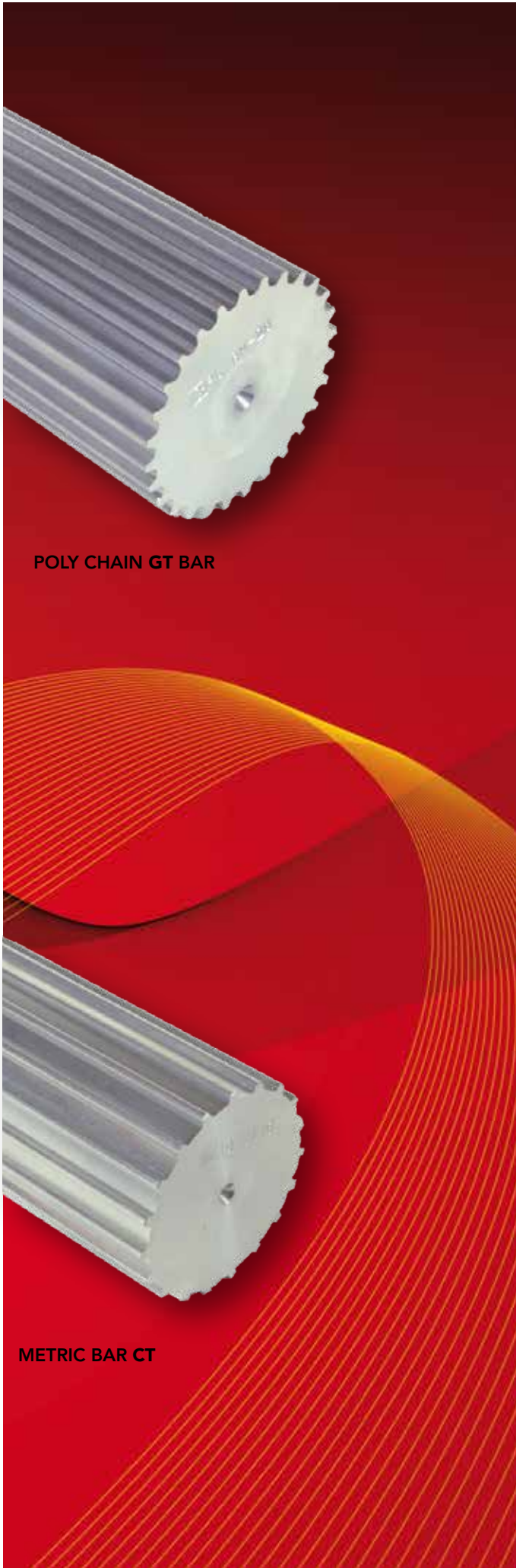
HTD BAR



POWER GRIP GT 5MR BAR



TIMING BELT BARS



POLY CHAIN GT BAR

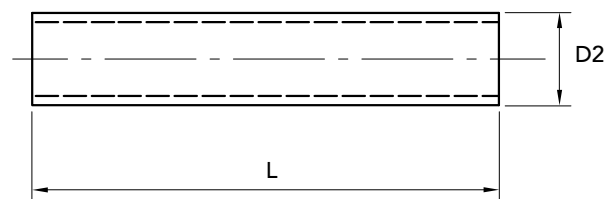
METRIC BAR CT



METRIC BAR T



8M - 14M



$$L \text{ USEFUL} = L \text{ TOTAL}$$

8M (pitch 8mm)

14M (pitch 14mm)

TYPE	PART NUMBER	Dp	De	L	SUITABLE FLANGE	Weight Kg.	TYPE	CODE	Dp	De	L	SUITABLE FLANGE	Weight Kg.
8M-22	48600022	56,02	54,42	180	58	3,20	14M-28	48800028	124,78	121,98	200	153	18,00
8M-25	48600025	63,66	62,06	180	61	4,20	14M-30	48800030	133,69	130,89	200	154	20,80
8M-28	48600028	71,30	69,70	180	62	5,20	14M-32	48800032	142,60	139,80	200	157	23,80
8M-30	48600030	76,39	74,79	180	82	6,00	14M-34	48800034	151,52	148,72	200	158	27,00
8M-32	48600032	81,49	79,89	180	65	6,90	14M-36	48800036	160,43	157,63	200	168	30,30
8M-34	48600034	86,58	84,98	180	66	7,80	14M-38	48800038	169,34	166,54	200	161	33,90
8M-36	48600036	91,67	90,07	180	68	8,90	14M-40	48800040	178,25	175,45	200	162	37,70
8M-38	48600038	96,77	95,17	180	70	10,0	14M-44	48800044	196,08	193,28	200	165	45,90
8M-40	48600040	101,86	100,26	200	77	12,3	14M-48	48800048	213,90	211,11	200	167	54,80
8M-45	48600045	114,59	112,99	200	75	15,4							
8M-48	48600048	122,23	120,63	200	78	17,7							
8M-50	48600050	127,32	125,72	200	80	18,2							
8M-56	48600056	142,60	141,00	200	85	24,5							
8M-60	48600060	152,79	151,19	200	86	28,1							
8M-64	48600064	162,97	161,37	200	90	31,8							
8M-75	48600075	190,99	189,39	200	100	44,0							

MATERIAL **STEEL C40
UNI 7845**

CAD drawings available on our site
www.chiaravalli.com

Quantity, availability and prices
 on B2B Chiaravalli



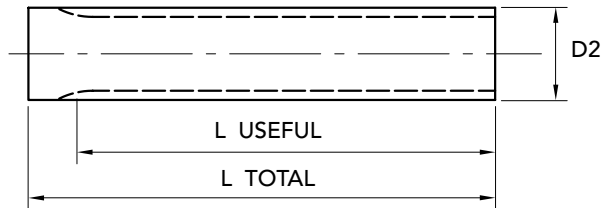


TIMING BARS MXL 0.080"

5

MXL 0.080" (2.032 mm)

The **MXL** bars are built in **Aluminium** suitable for the hard oxidation thickness.



TIMING BARS MXL 0.080" (2.032 mm)

TYPE	PART NUMBER	N. TEETH	De EXTERNAL	L USEFUL	L TOTAL	WEIGHT Kg.
MXL 12	42023012	12	7,26	50	75	0,01
MXL 14	42023014	14	8,56	50	75	0,01
MXL 15	42023015	15	9,19	50	75	0,01
MXL 16	42023016	16	9,83	50	75	0,02
MXL 18	42023018	18	11,12	50	75	0,02
MXL 20	42023020	20	12,42	90	120	0,04
MXL 22	42023022	22	13,72	125	140	0,05
MXL 24	42023024	24	15,01	125	140	0,06
MXL 25	42023025	25	15,67	125	140	0,07
MXL 26	42023026	26	16,31	125	140	0,08
MXL 28	42023028	28	17,60	125	140	0,09
MXL 30	42023030	30	18,90	125	140	0,10
MXL 32	42023032	32	20,19	125	140	0,12
MXL 34	42023034	34	21,49	125	140	0,13
MXL 36	42023036	36	22,78	132	140	0,15
MXL 38	42023038	38	24,09	132	140	0,17
MXL 40	42023040	40	25,37	132	140	0,19
MXL 42	42023042	42	26,67	140	140	0,20
MXL 44	42023044	44	27,94	140	140	0,23
MXL 45	42023045	45	28,60	140	140	0,24
MXL 48	42023048	48	30,53	140	140	0,27
MXL 50	42023050	50	31,83	140	140	0,30
MXL 60	42023060	60	38,30	160	160	0,49
MXL 70	42023070	70	44,78	160	160	0,67
MXL 72	42023072	72	46,05	160	160	0,72

9

MATERIAL **ALUMINIUM**



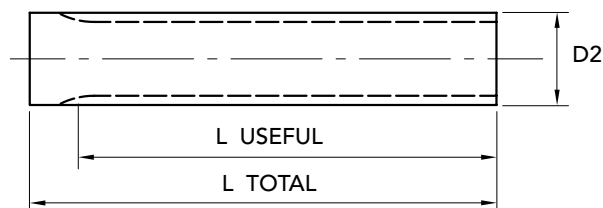
CAD drawings available on our site
www.chiaravalli.com

Quantity, availability and prices
on B2B Chiaravalli



XL 1/5" (5.08 mm)

The **XL** bars are built in **Steel** and **Aluminium** suitable for the hard oxidation thickness.



TYPE	PART NUMBER STEEL	PART NUMBER ALUMINIUM	N. TEETH	De EXTERNAL	L USEFUL	L TOTAL	STEEL WEIGHT Kg.	ALUMINIUM WEIGHT Kg.
XL 10	42000010	42003010	10	15,66	125	140	0,07	0,84
XL 11	42000011	42003011	11	17,28	125	140	0,08	0,92
XL 12	42000012	42003012	12	18,90	125	140	0,10	1,20
XL 13	42000013	42003013	13	20,51	125	140	0,11	1,08
XL 14	42000014	42003014	14	22,13	132	140	0,13	1,12
XL 15	42000015	42003015	15	23,75	132	140	0,16	1,44
XL 16	42000016	42003016	16	25,36	140	140	0,18	1,27
XL 17	42000017	42003017	17	26,98	140	140	0,20	1,31
XL 18	42000018	42003018	18	28,60	140	140	0,23	1,51
XL 19	42000019	42003019	19	30,22	140	140	0,26	1,70
XL 20	42000020	42003020	20	31,83	140	140	0,28	1,60
XL 21	42000021	42003021	21	33,45	160	160	0,36	2,06
XL 22	42000022	42003022	22	35,07	160	160	0,40	2,12
XL 23	42000023	42003023	23	36,60	160	160	0,44	2,32
XL 24	42000024	42003024	24	38,30	160	160	0,48	2,41
XL 25	42000025	42003025	25	39,93	160	160	0,51	2,75
XL 26	42000026	42003026	26	41,53	160	160	0,56	2,79
XL 27	42000027	42003027	27	43,15	160	160	0,60	3,90
XL 28	42000028	42003028	28	44,77	160	160	0,65	3,41
XL 29	42000029	42003029	29	46,39	160	160	0,70	3,42
XL 30	42000030	42003030	30	48,00	160	160	0,75	3,78
XL 32	42000032	42003032	32	51,24	160	160	0,87	3,93
XL 33	42000033	42003033	33	52,76	160	160	0,92	4,00
XL 34	42000034	42003034	34	54,47	160	160	0,98	4,48
XL 35	42000035	42003035	35	56,09	160	160	1,04	4,50
XL 36	42000036	42003036	36	57,7	160	160	1,1	4,60
XL 38	42000038	42003038	38	60,94	160	160	1,23	5,15
XL 39	42000039	42003039	39	62,56	160	160	1,3	5,20
XL 40	42000040	42003040	40	64,17	160	160	1,37	5,75
XL 41	42000041	42003041	41	65,79	160	160	1,43	6,00
XL 42	42000042	42003042	42	67,41	160	160	1,51	6,10
XL 43	42000043	42003043	43	69,02	160	160	1,58	6,50
XL 44	42000044	42003044	44	70,64	160	160	1,65	6,60
XL 48	42000048	42003048	48	77,11	160	160	1,98	7,57
XL 56	42000056	42003056	56	90,04	160	160	2,71	10,66
XL 60	42000060	42003060	60	96,51	160	160	3,1	10,90
XL 72	42000072	42003072	72	115,92	160	160	4,52	15,20

MATERIAL **STEEL C40
UNI 7845**

ALUMINIUM

CAD drawings available on our site
www.chiaravalli.com

Quantity, availability and prices
on B2B Chiaravalli

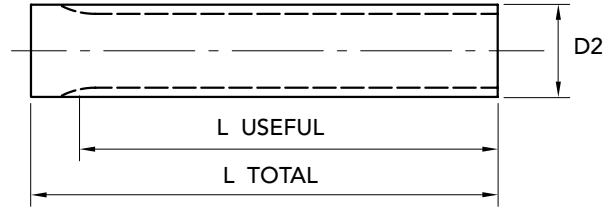




TIMING BARS L 3/8"

L 3/8" (9.525 mm)

The **L** bars are built in **Steel** and **Aluminium** suitable for the hard oxidation thickness.



TIMING BARS L 3/8" (9.525 mm)

TYPE	PART NUMBER STEEL	PART NUMBER ALUMINIUM	N. TEETH	De EXTERNAL	L USEFUL	L TOTAL	STEEL WEIGHT Kg.	ALUMINIUM WEIGHT Kg.
L 10	42013010	42010010	10	29,56	140	140	0,66	0,23
L 11	42013011	42010011	11	32,59	140	140	0,81	0,28
L 12	42013012	42010012	12	35,62	160	160	1,12	0,39
L 13	42013013	42010013	13	38,65	160	160	1,32	0,46
L 14	42013014	42010014	14	41,68	160	160	1,57	0,55
L 15	42013015	42010015	15	44,72	160	160	1,81	0,63
L 16	42013016	42010016	16	47,75	160	160	2,08	0,73
L 17	42013017	42010017	17	50,78	160	160	2,34	0,82
L 18	42013018	42010018	18	53,81	160	160	2,64	0,93
L 19	42013019	42010019	19	56,84	160	160	2,96	1,04
L 20	42013020	42010020	20	59,88	160	160	3,32	1,16
L 21	42013021	42010021	21	62,91	160	160	3,67	1,28
L 22	42013022	42010022	22	65,94	160	160	4,07	1,41
L 23	42013023	42010023	23	68,97	160	160	4,44	1,55
L 24	42013024	42010024	24	72,00	160	160	4,86	1,69
L 27	42013027	42010027	27	81,10	160	160	6,20	2,15
L 30	42013030	42010030	30	90,20	160	160	7,72	2,67

MATERIAL **STEEL C40
UNI 7845**
ALUMINIUM



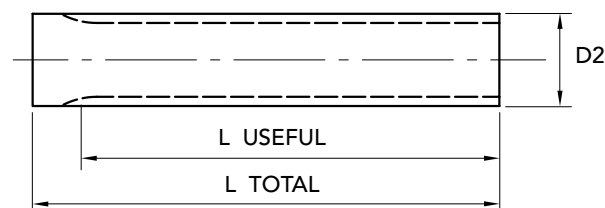
CAD drawings available on our site www.chiaravalli.com

Quantity, availability and prices on B2B Chiaravalli



HTD® 5M (Pitch 5 mm)

Aluminium material suitable for the hard oxidation.

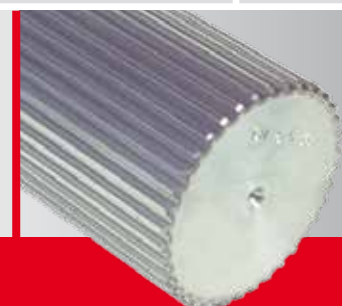


TYPE	PART NUMBER	N. TEETH	Dp	De EXTERNAL	L USEFUL	L TOTAL	WEIGHT Kg.
5M- 12	40200012	12	19,10	17,96	150	160	0,08
5M- 13	40200013	13	20,69	19,55	150	160	0,10
5M- 14	40200014	14	22,28	21,14	175	200	0,16
5M- 15	40200015	15	23,87	22,73	175	200	0,19
5M- 16	40200016	16	25,47	24,33	175	200	0,21
5M- 17	40200017	17	27,06	25,92	175	200	0,24
5M- 18	40200018	18	28,65	27,51	200	200	0,27
5M- 19	40200019	19	30,24	29,1	200	200	0,31
5M- 20	40200020	20	31,83	30,69	200	200	0,35
5M- 21	40200021	21	33,42	32,28	200	200	0,39
5M- 22	40200022	22	35,02	33,88	200	200	0,43
5M- 23	40200023	23	36,61	35,47	200	200	0,48
5M- 24	40200024	24	38,20	37,06	200	200	0,52
5M- 25	40200025	25	39,79	38,65	200	200	0,57
5M- 26	40200026	26	41,38	40,24	200	200	0,62
5M- 27	40200027	27	42,97	41,83	200	200	0,67
5M- 28	40200028	28	44,56	43,42	200	200	0,73
5M- 30	40200030	30	47,75	46,61	200	200	0,84
5M- 32	40200032	32	50,93	49,79	200	200	0,97
5M- 34	40200034	34	54,11	52,97	200	200	1,11
5M- 36	40200036	36	57,30	56,16	200	200	1,25
5M- 38	40200038	38	60,48	59,34	200	200	1,40
5M- 40	40200040	40	63,66	62,52	200	200	1,55
5M- 42	40200042	42	66,85	65,71	200	200	1,73
5M- 44	40200044	44	70,03	68,89	200	200	1,90
5M- 45	40200045	45	71,62	70,48	200	200	1,99
5M- 48	40200048	48	76,40	75,26	200	200	2,27
5M- 50	40200050	50	79,58	78,44	200	200	2,48
5M- 60	40200060	60	95,5	94,36	200	200	3,60
5M- 72	40200072	72	114,59	113,45	200	200	5,28

MATERIAL **ALUMINIUM**

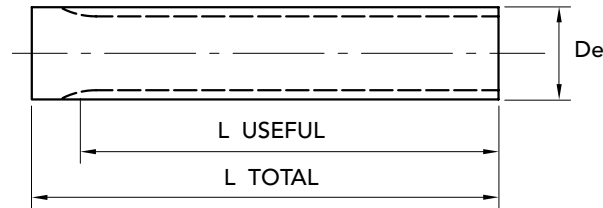
CAD drawings available on our site
www.chiaravalli.com

Quantity, availability and prices
 on B2B Chiaravalli





HTD® 8M (Pitch 8 mm)

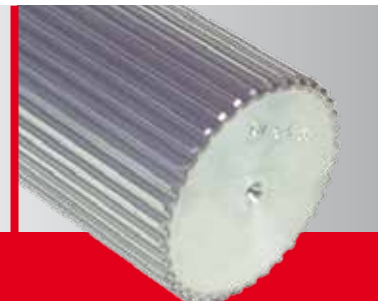


HTD® 8M TIMING BARS (pitch 8 mm)

TYPE	PART NUMBER	N. TEETH	De Ø PITCH	De EXTERNAL	L USEFUL	L TOTAL	WEIGHT Kg.
8M- 18	40400018	18	45,84	44,47	200	200	2,03
8M- 19	40400019	19	48,38	47,01	200	200	2,30
8M- 20	40400020	20	50,93	49,56	200	200	2,57
8M- 21	40400021	21	53,48	52,11	200	200	2,88
8M- 22	40400022	22	56,02	54,65	200	200	3,18
8M- 23	40400023	23	58,57	57,20	200	200	3,52
8M- 24	40400024	24	61,12	59,75	200	200	3,86
8M- 25	40400025	25	63,66	62,29	200	200	4,23
8M- 26	40400026	26	66,21	64,84	200	200	4,60
8M- 28	40400028	28	71,30	69,93	200	200	5,40
8M- 30	40400030	30	76,40	75,03	200	200	6,27
8M- 32	40400032	32	81,49	80,12	200	200	7,20
8M- 34	40400034	34	86,58	85,21	200	200	8,20
8M- 35	40400035	35	89,13	87,76	200	200	8,71
8M- 36	40400036	36	91,68	90,31	200	200	9,26
8M- 38	40400038	38	96,77	95,40	200	200	19,39
8M- 40	40400040	40	101,86	100,49	200	200	11,58
8M- 44	40400044	44	112,05	110,67	200	200	14,16
8M- 48	40400048	48	122,23	120,86	200	200	16,99

MATERIAL **STEEL C40**
UNI 7845

CAD drawings available on our site
www.chiaravalli.com

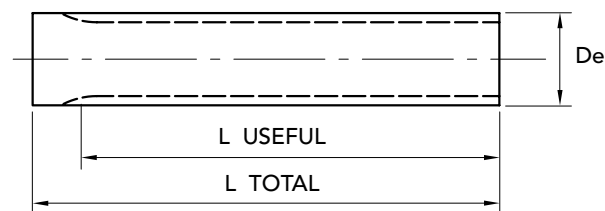


Quantity, availability and prices
on B2B Chiaravalli



GT® 3MR

The GT® 3MR bars are built in **Aluminium** suitable for the hard oxidation thickness.

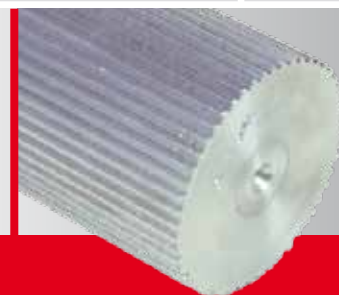


TYPE	PART NUMBER	N. TEETH	Dp Ø PITCH	De EXTERNAL	L USEFUL	L TOTAL	WEIGHT Kg.
10-3MR	47030010	10	9,55	8,79	75	100	0,02
12-3MR	47030012	12	11,46	10,70	100	125	0,03
14-3MR	47030014	14	13,37	12,61	100	125	0,04
15-3MR	47030015	15	14,32	13,56	100	125	0,05
16-3MR	47030016	16	15,28	14,52	125	155	0,06
18-3MR	47030018	18	17,19	16,43	125	155	0,08
20-3MR	47030020	20	19,10	18,34	150	165	0,11
21-3MR	47030021	21	20,05	19,29	150	165	0,12
22-3MR	47030022	22	21,01	20,25	150	165	0,14
24-3MR	47030024	24	22,92	22,16	150	165	0,16
26-3MR	47030026	26	24,83	24,07	150	165	0,12
28-3MR	47030028	28	26,74	25,98	150	165	0,23
30-3MR	47030030	30	28,65	27,89	175	183	0,29
32-3MR	47030032	32	30,56	29,80	175	183	0,33
34-3MR	47030034	34	32,47	31,71	175	183	0,38
36-3MR	47030036	36	34,38	33,62	200	200	0,47
38-3MR	47030038	38	36,29	35,53	200	200	0,53
40-3MR	47030040	40	38,20	37,44	200	200	0,58
44-3MR	47030044	44	42,02	41,26	200	200	0,71
48-3MR	47030048	48	45,84	45,08	200	200	0,85
52-3MR	47030052	52	49,66	48,90	200	200	1,01
56-3MR	47030056	56	54,48	52,72	200	200	1,08
60-3MR	47030060	60	57,30	56,54	200	200	1,36
64-3MR	47030064	64	61,12	60,36	200	200	1,55
72-3MR	47030072	72	68,75	67,99	200	200	1,97

MATERIAL **ALUMINIUM**

CAD drawings available on our site
www.chiaravalli.com

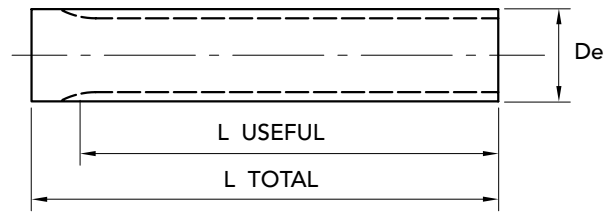
Quantity, availability and prices
on B2B Chiaravalli





GT® 5MR

The GT® 5MR bars are built in **Aluminium** suitable for the hard oxidation thickness.



GT® 5MR TIMING BARS

TYPE	PART NUMBER	N. TEETH	Dp Ø PITCH	De EXTERNAL	L USEFUL	L TOTAL	WEIGHT Kg.
12-5MR	47050012	12	19,10	17,96	150	165	0,09
14-5MR	47050014	14	22,28	21,14	175	183	0,15
15-5MR	47050015	15	23,87	22,73	175	183	0,17
16-5MR	47050016	16	25,46	24,32	175	183	0,20
18-5MR	47050018	18	28,65	27,51	200	200	0,29
20-5MR	47050020	20	31,83	30,69	200	200	0,36
21-5MR	47050021	21	33,42	32,28	200	200	0,40
22-5MR	47050022	22	35,01	33,87	200	200	0,45
24-5MR	47050024	24	38,20	37,06	200	200	0,54
26-5MR	47050026	26	41,38	40,24	200	200	0,65
28-5MR	47050028	28	44,56	43,42	200	200	0,76
30-5MR	47050030	30	47,75	46,60	200	200	0,88
32-5MR	47050032	32	50,93	49,79	200	200	1,01
34-5MR	47050034	34	54,11	52,97	200	200	1,15
36-5MR	47050036	36	57,30	56,16	200	200	1,29
40-5MR	47050040	40	63,66	62,52	200	200	1,62
44-5MR	47050044	44	70,03	68,89	200	200	1,97
48-5MR	47050048	48	76,39	75,25	200	200	2,37
54-5MR	47050054	54	85,94	84,80	200	200	3,02
60-5MR	47050060	60	95,49	94,35	200	200	3,76
64-5MR	47050064	64	101,86	100,72	200	200	4,30
72-5MR	47050072	72	114,59	113,45	200	200	5,48

MATERIAL **ALUMINIUM**



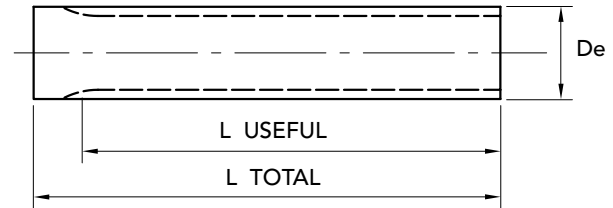
CAD drawings available on our site www.chiaravalli.com

Quantity, availability and prices on B2B Chiaravalli



T 2.5 (Pitch 2.5 mm)

The T 2.5 bars are built in **Aluminium** suitable for the hard oxidation thickness.



TYPE	PART NUMBER	N. TEETH	De EXTERNAL	L USEFUL	L TOTAL	WEIGHT Kg.
T 2,5- 10	45020010	10	7,45	50	75	0,01
T 2,5- 12	45020012	12	9,00	50	75	0,01
T 2,5- 13	45020013	13	9,80	50	75	0,02
T 2,5- 14	45020014	14	10,60	50	75	0,02
T 2,5- 15	45020015	15	11,40	50	75	0,02
T 2,5- 16	45020016	16	12,20	50	75	0,03
T 2,5- 17	45020017	17	13,00	50	75	0,03
T 2,5- 18	45020018	18	13,80	50	75	0,03
T 2,5- 19	45020019	19	14,60	90	120	0,05
T 2,5- 20	45020020	20	15,40	90	120	0,06
T 2,5- 21	45020021	21	16,20	90	120	0,06
T 2,5- 22	45020022	22	17,00	125	140	0,08
T 2,5- 24	45020024	24	18,55	125	140	0,09
T 2,5- 26	45020026	26	20,15	125	140	0,10
T 2,5- 27	45020027	27	20,95	125	140	0,12
T 2,5- 28	45020028	28	21,75	125	140	0,13
T 2,5- 29	45020029	29	22,55	125	140	0,14
T 2,5- 30	45020030	30	23,35	125	140	0,16
T 2,5- 32	45020032	32	24,95	125	140	0,18
T 2,5- 34	45020034	34	26,55	125	140	0,20
T 2,5- 35	45020035	35	27,35	132	140	0,20
T 2,5- 36	45020036	36	28,10	132	140	0,22
T 2,5- 38	45020038	38	29,70	140	140	0,25
T 2,5- 40	45020040	40	31,30	140	140	0,28
T 2,5- 42	45020042	42	32,90	140	140	0,31
T 2,5- 44	45020044	44	34,50	140	140	0,34
T 2,5- 45	45020045	45	35,30	140	140	0,36
T 2,5- 48	45020048	48	37,70	140	140	0,41
T 2,5- 50	45020050	50	39,29	160	160	0,51
T 2,5- 60	45020060	60	47,25	160	160	0,74
T 2,5- 65	45020065	65	51,20	160	160	0,90
T 2,5- 70	45020070	70	55,20	160	160	1,01
T 2,5- 72	45020072	72	56,80	160	160	1,07
T 2,5- 90	45020090	90	71,12	160	160	1,64
T 2,5- 100	45020100	100	79,08	160	160	2,09

MATERIAL **ALUMINIUM**

ON REQUEST T 20
bars are available.

CAD drawings available on our site
www.chiaravalli.com

Quantity, availability and prices
on B2B Chiaravalli

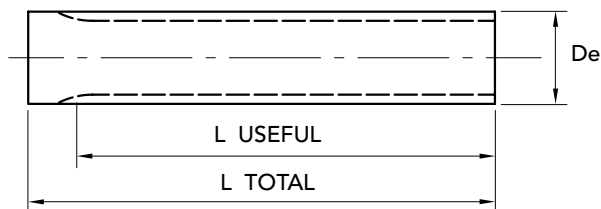




METRIC TIMING BARS FOR METRIC BELTS "T" 5

T 5 (Pitch 5 mm)

The T5 bars are built in **Aluminium** suitable for the hard oxidation thickness.



TYPE	PART NUMBER	N. TEETH	De EXTERNAL	L USEFUL	L TOTAL	WEIGHT Kg.
T 5- 10	45050010	10	15,05	125	140	0,07
T 5- 11	45050011	11	16,65	125	140	0,08
T 5- 12	45050012	12	18,25	125	140	0,10
T 5- 13	45050013	13	19,85	125	140	0,12
T 5- 14	45050014	14	21,45	140	140	0,13
T 5- 15	45050015	15	23,05	140	140	0,16
T 5- 16	45050016	16	24,60	140	140	0,18
T 5- 17	45050017	17	26,20	140	140	0,20
T 5- 18	45050018	18	27,00	140	140	0,22
T 5- 19	45050019	19	29,40	140	140	0,24
T 5- 20	45050020	20	31,00	160	160	0,31
T 5- 21	45050021	21	32,70	160	160	0,33
T 5- 22	45050022	22	34,15	160	160	0,36
T 5- 23	45050023	23	35,85	160	160	0,40
T 5- 24	45050024	24	37,40	160	160	0,44
T 5- 25	45050025	25	38,95	160	160	0,48
T 5- 26	45050026	26	40,60	160	160	0,53
T 5- 27	45050027	27	42,20	160	160	0,57
T 5- 28	45050028	28	43,75	160	160	0,61
T 5- 29	45050029	29	45,35	160	160	0,66
T 5- 30	45050030	30	46,95	160	160	0,69
T 5- 32	45050032	32	50,10	160	160	0,81
T 5- 34	45050034	34	53,25	160	160	0,91
T 5- 35	45050035	35	54,85	160	160	0,98
T 5- 36	45050036	36	56,45	160	160	1,04
T 5- 37	45050037	37	58,06	160	160	1,10
T 5- 38	45050038	38	59,65	160	160	1,17
T 5- 40	45050040	40	62,85	160	160	1,33
T 5- 42	45050042	42	66,00	160	160	1,43
T 5- 44	45050044	44	69,20	160	160	1,58
T 5- 45	45050045	45	70,80	160	160	1,65
T 5- 46	45050046	46	72,40	160	160	1,72
T 5- 48	45050048	48	75,55	160	160	1,88
T 5- 50	45050050	50	78,75	160	160	2,05
T 5- 60	45050060	60	94,65	160	160	3,00
T 5- 72	45050072	72	113,75	160	160	4,34
T 5- 80	45050080	80	126,48	160	160	5,38
T 5- 90	45050090	90	142,40	160	160	6,84
T 5- 100	45050100	100	158,31	160	160	8,46

MATERIAL **ALUMINIUM**

ON REQUEST T 20
bars are available.

CAD drawings available on our site
www.chiaravalli.com

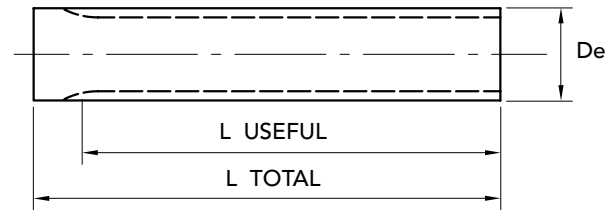
Quantity, availability and prices
on B2B Chiaravalli





T 10 (Pitch 10 mm)

The T 10 bars are built in **Aluminium** suitable for the hard oxidation thickness.



TYPE	PART NUMBER	N. TEETH	De EXTERNAL	L USEFUL	L TOTAL	WEIGHT Kg.
T 10- 10	45100010	10	29,98	140	140	0,23
T 10- 11	45100011	11	33,16	140	140	0,29
T 10- 12	45100012	12	36,35	140	140	0,35
T 10- 13	45100013	13	39,55	140	140	0,42
T 10- 14	45100014	14	42,70	160	160	0,56
T 10- 15	45100015	15	45,90	160	160	0,66
T 10- 16	45100016	16	49,10	160	160	0,76
T 10- 17	45100017	17	52,25	160	160	0,86
T 10- 18	45100018	18	55,45	160	160	0,99
T 10- 19	45100019	19	58,65	160	160	1,10
T 10- 20	45100020	20	61,80	160	160	1,22
T 10- 21	45100021	21	65,00	160	160	1,32
T 10- 22	45100022	22	68,15	160	160	1,45
T 10- 23	45100023	23	71,35	160	160	1,60
T 10- 24	45100024	24	74,55	160	160	1,76
T 10- 26	45100026	26	80,90	160	160	2,08
T 10- 28	45100028	28	87,25	160	160	2,44
T 10- 30	45100030	30	93,65	160	160	2,84
T 10- 32	45100032	32	100,00	160	160	3,25
T 10- 34	45100034	34	106,40	160	160	3,69
T 10- 36	45100036	36	112,75	160	160	4,15
T 10- 38	45100038	38	119,10	160	160	4,62
T 10- 40	45100040	40	125,45	160	160	5,15
T 10- 45	45100045	45	141,40	160	160	6,59
T 10- 48	45100048	48	150,95	160	160	7,55
T 10- 60	45100060	60	189,15	160	160	11,78
T 10- 72	45100072	72	227,29	160	160	17,16

MATERIAL **ALUMINIUM**

ON REQUEST T 20
bars are available.

CAD drawings available on our site
www.chiaravalli.com

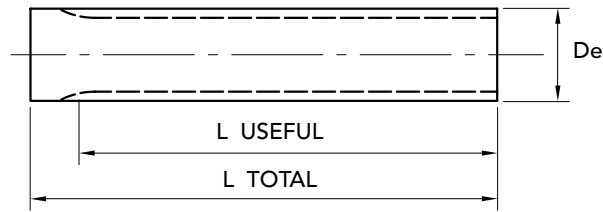
Quantity, availability and prices
on B2B Chiaravalli





CT 5 (Pitch 5 mm)

The CT 5 bars are built in **Aluminium** suitable for the hard oxidation thickness.



METRIC TIMING BARS FOR METRIC BELTS "AT" 5 (Pitch 5 mm)

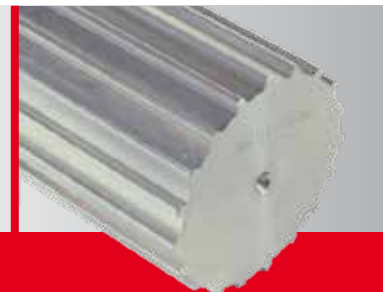
TYPE	PART NUMBER	N. TEETH	De EXTERNAL	L USEFUL	L TOTAL	WEIGHT Kg.
CT5- 12	46050012	12	17,85	140	140	0,08
CT5- 13	46050013	13	19,45	140	140	0,10
CT5- 14	46050014	14	21,05	140	140	0,12
CT5- 15	46050015	15	22,65	140	140	0,14
CT5- 16	46050016	16	24,20	140	140	0,15
CT5- 18	46050018	18	27,40	140	140	0,20
CT5- 19	46050019	19	29,00	140	140	0,23
CT5- 20	46050020	20	30,60	160	160	0,30
CT5- 21	46050021	21	32,30	160	160	0,33
CT5- 22	46050022	22	33,85	160	160	0,36
CT5- 23	46050023	23	35,45	160	160	0,40
CT5- 24	46050024	24	37,00	160	160	0,44
CT5- 25	46050025	25	38,55	160	160	0,47
CT5- 26	46050026	26	40,20	160	160	0,51
CT5- 28	46050028	28	43,25	160	160	0,60
CT5- 30	46050030	30	46,55	160	160	0,69
CT5- 32	46050032	32	49,70	160	160	0,81
CT5- 34	46050034	34	52,85	160	160	0,90
CT5- 36	46050036	36	56,05	160	160	1,02
CT5- 38	46050038	38	59,25	160	160	1,14
CT5- 40	46050040	40	62,45	160	160	1,28
CT5- 42	46050042	42	65,60	160	160	1,41
CT5- 44	46050044	44	68,80	160	160	1,55
CT5- 46	46050046	46	72,00	160	160	1,70
CT5- 48	46050048	48	75,15	160	160	1,85
CT5- 52	46050052	52	81,55	160	160	2,19
CT5- 56	46050056	56	87,90	160	160	2,55
CT5- 60	46050060	60	94,25	160	160	2,94
CT5- 64	46050064	64	100,65	160	160	3,36
CT5- 72	46050072	72	113,35	160	160	4,29

MATERIAL **ALUMINIUM**

ON REQUEST T 20
bars are available.

CAD drawings available on our site
www.chiaravalli.com

Quantity, availability and prices
on B2B Chiaravalli



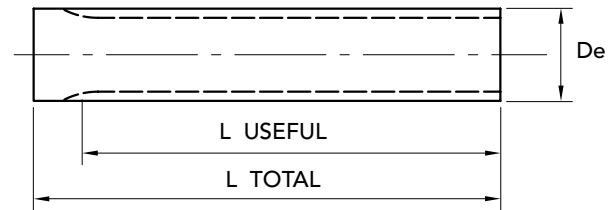


METRIC TIMING BARS FOR METRIC BELTS "AT" 10

METRIC TIMING BARS FOR METRIC BELTS "AT" 10 (Pitch 10 mm)

CT 10 (Pitch 10 mm)

The CT 10 bars are built in **Aluminium** suitable for the hard oxidation thickness.



TYPE	PART NUMBER	N. TEETH	De EXTERNAL	L USEFUL	L TOTAL	WEIGHT Kg.
CT10- 15	46100015	15	45,90	160	160	0,62
CT10- 16	46100016	16	49,14	160	160	0,72
CT10- 18	46100018	18	55,45	160	160	0,92
CT10- 19	46100019	19	58,65	160	160	1,05
CT10- 20	46100020	20	61,80	160	160	1,17
CT10- 21	46100021	21	65,00	160	160	1,31
CT10- 22	46100022	22	68,20	160	160	1,44
CT10- 23	46100023	23	71,35	160	160	1,60
CT10- 24	46100024	24	74,55	160	160	1,75
CT10- 25	46100025	25	77,75	160	160	1,91
CT10- 26	46100026	26	80,90	160	160	2,06
CT10- 28	46100028	28	87,25	160	160	2,42
CT10- 30	46100030	30	93,65	160	160	2,79
CT10- 32	46100032	32	100,00	160	160	3,20
CT10- 34	46100034	34	106,40	160	160	3,65
CT10- 36	46100036	36	112,75	160	160	4,09
CT10- 38	46100038	38	119,10	160	160	4,59
CT10- 40	46100040	40	125,45	160	160	5,16
CT10- 42	46100042	42	131,85	160	160	5,65
CT10- 44	46100044	44	138,20	160	160	6,22
CT10- 46	46100046	46	144,55	160	160	6,84
CT10- 48	46100048	48	150,95	160	160	7,45
CT10- 52	46100052	52	163,65	160	160	8,93
CT10- 56	46100056	56	176,40	160	160	10,39
CT10- 60	46100060	60	189,15	160	160	11,78

MATERIAL **ALUMINIUM**

ON REQUEST T 20
bars are available.

CAD drawings available on our site
www.chiaravalli.com

Quantity, availability and prices
on B2B Chiaravalli





FLANGES FOR PULLEYS

FLANGES FOR PULLEYS

page 19

FLANGES SIZES

Thickness **0,5 mm**

20

Thickness **1 mm**

20

Thickness **1,5 mm**

21

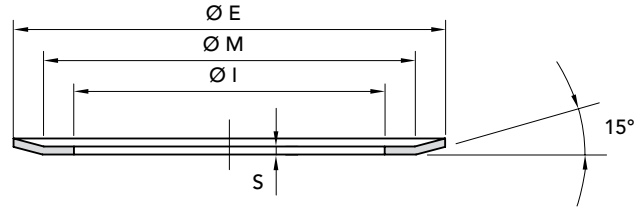
Thickness **2,5 mm**

21



FLANGES FOR PULLEYS

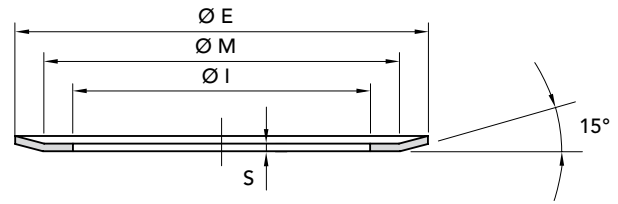




TYPE PULLEYS

No TEETH PULLEY	MXL	XL	L	H	XH	XXH	GT 3MR HTD 3M	GT 5MR HTD 5M	HTD 8M	HTD 14M	PC GT 8M	PC GT 14M	T 2,5	CT 5 T 5	CT 10 T 10
N. FLANGE															
10		1	50				501							3	7
11		1	50											1	9
12		2	52				502	14					501	1	13
13		2	83										501	2	12
14		4	54	59			503	2					502	2	11
15		4	55	60			516	4					502	4	16
16	502	5	56	61			504	4					503	5	18
17		6	57	62									503	5	20
18	503	7	58	63	155	163	505	6					504	6	21
19		7	59	64	156								505	8	24
20	503	9	60	76	157	165	517	8					505	8	24
21		9	61	66	158		518	9					505	9	26
22	504	10	62	67	159	169	518	15	53		53		512	9	27
23		13	63	68									512	10	27
24	505	12	63	70	161	173	518	13	69				512	13	29
25		12	64	71	162						61		506	12	29
26		11	65	72	163	178	508	12	61				507	12	31
27		11	65	74	164								507	11	32
28	506	16	66	75	165		509	11	79	153	79	153	507	11	33
29		16		75									507	16	
30	506	18	68	78	167		509	16	73	154	82	154	508	16	35
32	507	20	70	80	169		510	18	76	160	76	160	509	18	38
33			71	81									509		
34		22	72	81	170			20	66	166	66	171	509	21	72
35		22	72	85									509	22	
36	508	23	74	85			519	21	68	168	68	168	510	23	43
37													510	23	
38		24		86				24	70	172	70	172	510	24	78
39		24													
40	509	26	78	90			513	25	77	162	77	174	511	24	47
41		26													
42	509	27	80	94									511	26	
43		27													
44	510	27	81	95			520	27	75	175		175	513	27	
45			81	96							75			27	85
46														29	
48		29	85	100				29	78	180	78	180	513	29	86
50											80	169	514	31	
56		35						33	85	182	85	182			
60		38									86		515	38	100
64								38	90	184	90				
72								43	97						




FLANGES SIZES THICKNESS 0,5 mm - 1 mm
THICKNESS 0,5 mm - 1 mm
MATERIAL FE ZINCPLATED
MATERIAL FE

THICKNESS 0,5 mm
THICKNESS 1 mm

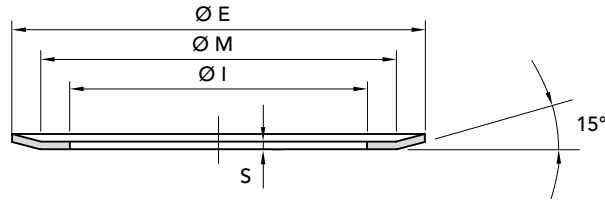
No FLANGE	PART NUMBER	Thickness S = 0,5 mm			Weight Kg.	No FLANGE	PART NUMBER	Thickness S = 1 mm			Weight Kg.
		Ø E	Ø I	Ø M				Ø E	Ø I	Ø M	
501	49200501	13	6	10	0,01	1	49200001	23	12,5	18	0,03
502	49200502	15	8	12	0,01	2	49200002	25	15	21,5	0,03
503	49200503	16	9,5	13	0,01	3	49200003	19,5	12	17,5	0,02
504	49200504	17,5	11,6	14,5	0,01	4	49200004	28	17,8	24	0,04
505	49200505	20	12,2	16,5	0,02	5	49200005	32	20	26	0,04
506	49200506	25	14,5	21,5	0,03	6	49200006	32	23	27,5	0,04
507	49200507	26	17,8	24	0,03	7	49200007	35	23	30,5	0,05
508	49200508	28	20	25	0,03	8	49200008	36	25	31	0,05
509	49200509	32	23	27,5	0,04	9	49200009	38	26,5	34	0,05
510	49200510	36	25	31	0,05	10	49200010	41	30	36	0,06
511	49200511	38	26,5	34	0,06	11	49200011	48	37	43,5	0,07
512	49200512	22	14,5	19	0,03	12	49200012	44	32,5	40,5	0,06
513	49200513	42	30,5	38	0,06	13	49200013	42	30,5	38	0,06
514	49200514	44	32,5	40,5	0,06	14	49200014	23	14	20	0,02
515	49200515	51	40	47	0,07	15	49200015	39	28	34,5	0,05
516	49200516	17,5	10,5	14,5	0,10	16	49200016	51	40	47	0,07
517	49200517	23	14	20	0,20	17					
518	49200518	25	15	21,5	0,30	18	49200018	54	43	50,5	0,08
519	49200519	39	28	34,5	0,50	19					
520	49200520	48	37	43,5	0,70	20	49200020	57	47	51,5	0,07
						21	49200021	60	47	57	0,10
						22	49200022	61	49	56,5	0,10
						23	49200023	64	47	57	0,10
						24	49200024	66,5	52	63	0,14
						25	49200025	71	56	64	0,14
						26	49200026	70	53	66,5	0,15
						27	49200027	75	60	68,5	0,15
						28					
						29	49200029	83	68	78	0,17
						30					
						31	49200031	87	72	82,5	0,18
						32	49200032	91	76	85,5	0,19
						33	49200033	93	80	89	0,17
						34					
						35	49200035	102	83	93,8	0,27
						36					
						37					
						38	49200038	106	90	101	0,24
						39					
						40					
						41					
						42					
						43	49200043	119	103	113,5	0,27
						44					
						45					
						46					
						47	49200047	131	115	125,5	0,30



FLANGES SIZES

THICKNESS 1,5 mm - 2,5 mm

MATERIAL FE



FLANGES SIZES THICKNESS 1,5 mm - 2,5 mm

No FLANGE	PART NUMBER	THICKNESS 1,5 mm			Weight Kg.
		Thickness S = 1,5 mm			
		Ø E	Ø I	Ø M	
50	49200050	37	25	33	0,06
51	49200051	39	28	34,5	0,06
52	49200052	43	31	39	0,06
53	49200053	60	47	57	0,12
54	49200054	48	37	42	0,05
55	49200055	51	38,5	45	0,06
56	49200056	54	43	48	0,06
57	49200057	57	46	51	0,07
58	49200058	60	48	54,2	0,07
59	49200059	64	47	57	0,16
60	49200060	66,5	53	60,2	0,14
61	49200061	70	53	64	0,18
62	49200062	75	57	68	0,18
63	49200063	79	60	72,5	0,18
64	49200064	82,5	64	76	0,23
65	49200065	86	68	81,5	0,24
66	49200066	91	73	86	0,23
67	49200067	94	76	88	0,23
68	49200068	97	79	92	0,23
69	49200069	66	52	61,5	0,14
70	49200070	102	82,5	97	0,30
71	49200071	106	86	100	0,31
72	49200072	112	91	105,5	0,31
73	49200073	83	68	76,5	0,18
74	49200074	115	94	109	0,37
75	49200075	120	99,5	112,5	0,36
76	49200076	87	72	82,5	0,20
77	49200077	106	90	101	0,20
78	49200078	128	107	121	0,30
79	49200079	75	60	70,5	0,22
80	49200080	135	115	128,5	0,43
81	49200081	142	120	137	0,79
82	49200082	82,5	67	76	0,25
83	49200083	44	32,5	40,5	0,25
84					
85	49200085	150	130	145	0,30
86	49200086	158	138,5	153	0,30
87					
88					
89					
90	49200090	168	148	161	0,50
91					
92					
93					
94	49200094	180	154	174	0,70
95	49200095	184	162	177	0,70
96	49200096	192	165	181,5	0,70
97	49200097	192	173	187	0,70
98					
99					
100	49200100	200	180	193	0,100

No FLANGE	PART NUMBER	THICKNESS 2,5 mm			Weight Kg.
		Thickness S = 2,5 mm			
		Ø E	Ø I	Ø M	
150					
151					
152					
153	49200153	128	107	124	0,50
154	49200154	138	112	131	0,65
155	49200155	140	107	125	0,80
156	49200156	146	107	133	0,99
157	49200157	155	107	139	1,20
158	49200158	160	120	148	1,10
159	49200159	170	120	153	1,40
160	49200160	154	122	142	0,87
161	49200161	184	135	168	1,54
162	49200162	188	150	176	1,25
163	49200163	198	150	180	1,65
164	49200164	205	160	189	1,62
165	49200165	212	162	200	1,84
166	49200166	160	130	150	0,86
167	49200167	227	176	210	2,00
168	49200168	168	135	162	0,98
169	49200169	240	192	224	2,04
170	49200170	256	220	240	1,60
171	49200171	160	136	150	0,70
172	49200172	183	145	170	1,22
173	49200173	267	220	240	2,25
174	49200174	188	160	177	0,96
175	49200175	211	173	198	1,44
176					
177	49200177	297	249	280	2,58
178	49200178	290	230	260	3,07
179					
180	49200180	226	190	214	1,47
181					
182	49200182	256	225	247	1,47
183					
184	49200184	296	260	287	1,97

SHIPPING SERVICES



B2B

*Chiaravalli Group SpA
E-commerce service*

FAST TRACK

*Daily Shipments
by air*



PRIORITY TRUCK SERVICE

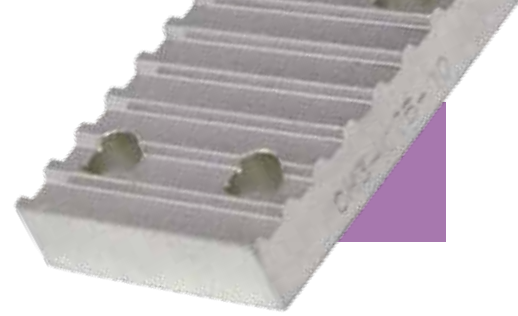
Truck priority Shipments

ADVANCED SHIPPING

*Thirty hours Shipments
by air or truck*

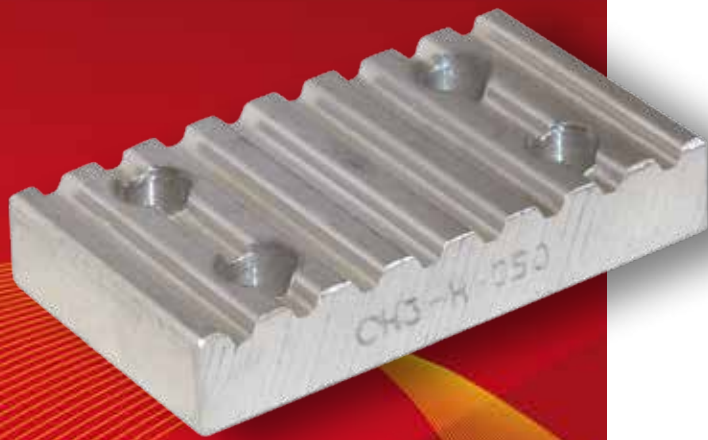
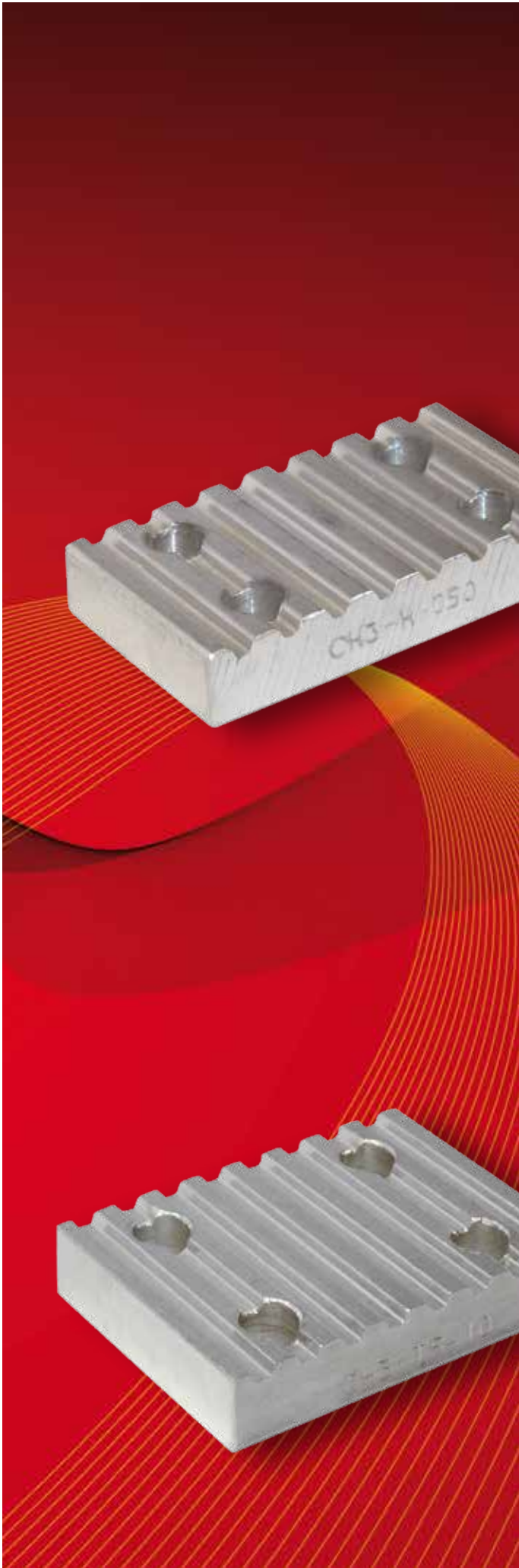


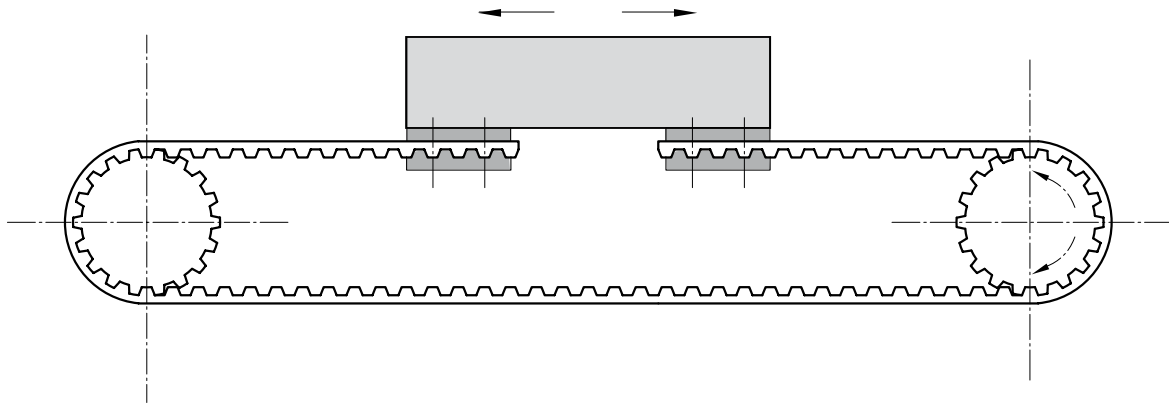
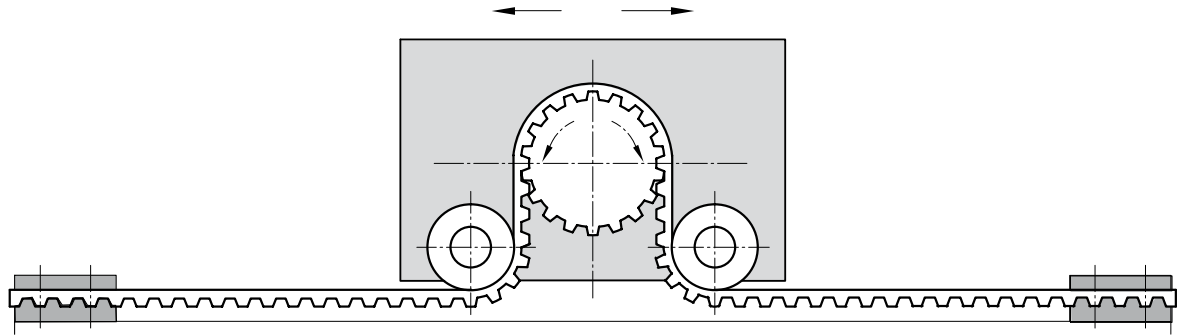
YOUR SINGLE NEED IS OUR PRIORITY



CLAMPING BELTS PLATES

PLATE FOR TIMING BELT POWERGRIP [®] POSITIVE	page 26
PLATE FOR TIMING BELT POWERGRIP [®] HTD [®]	27
PLATE FOR TIMING BELT METRIC PITCH "T"	28
PLATE FOR TIMING BELT METRIC PITCH "AT"	29



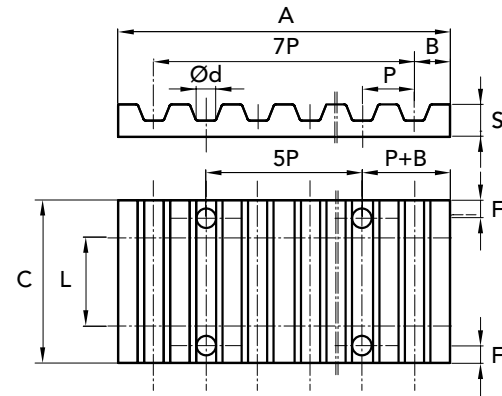


Fixing timing belts through clamping plates enable to modify rotatory motion of pulleys in a linear and alternated motion.



PLATE FOR TIMING BELT POWERGRIP® POSITIVE

PLATE FOR TIMING BELT POWERGRIP® POSITIVE



TYPE	PART NUMBER	P	L	F	d	B	A	S	C	WEIGHT Kg.
XL 025	49341001	5,08	6,35	6	5,5	3,5	42,5	8	25,5	0,02
XL 037	49341003	5,08	9,52	6	5,5	3,5	42,5	8	28,5	0,02
L 050	49342050	9,52	12,70	8	9,0	5,0	76,6	15	39	0,10
L 075	49342075	9,52	19,05	8	9,0	5,0	76,6	15	45	0,12
L 100	49342100	9,52	25,40	8	9,0	5,0	76,6	15	51,5	0,16
H 050	49343050	12,70	12,70	10	11,0	9,0	106,9	22	45	0,25
H 075	49343075	12,70	19,05	10	11,0	9,0	106,9	22	51	0,30
H 100	49343100	12,70	25,40	10	11,0	9,0	106,9	22	57,5	0,33

MATERIAL **ALUMINUM**



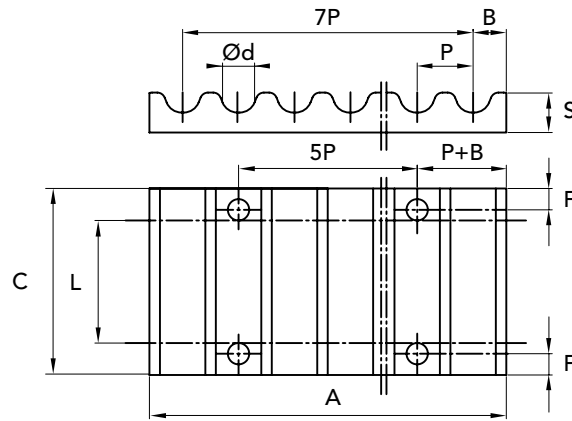
CAD drawings available on our site
www.chiaravalli.com

Quantity, availability and prices
on B2B Chiaravalli



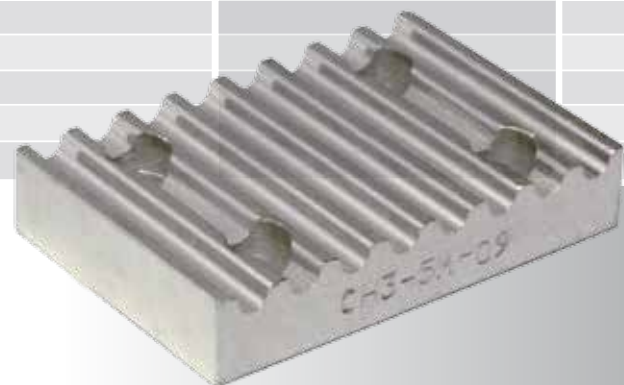
PLATE FOR TIMING BELT POWERGRIP® HTD®

27



TYPE	PART NUMBER	P	L	F	d	B	A	S	C	WEIGHT Kg.
5M 09	49340209	5	09	6	5,5	3,2	41,5	8	28	0,02
5M 15	49340215	5	15	6	5,5	3,2	41,5	8	34	0,03
5M 25	49340225	5	25	6	5,5	3,2	41,5	8	44	0,04
8M 20	49340420	8	20	8	9	5	66	15	45	0,10
8M 30	49340430	8	30	8	9	5	66	15	55	0,12
8M 50	49340450	8	50	8	9	5	66	15	75	0,17
8M 85	49340485	8	85	8	9	5	66	15	110	0,25
14M 40	49341440	14	40	10	11	9	116	22	71	0,40
14M 55	49341455	14	55	10	11	9	116	22	86	0,50
14M 85	49341485	14	85	10	11	9	116	22	116	0,68
14M 115	49341490	14	115	10	11	9	116	22	146	0,85
14M 170	49341492	14	170	10	11	9	116	22	201	1,20

PLATE FOR TIMING BELT POWERGRIP® HTD®



MATERIAL **ALUMINUM**

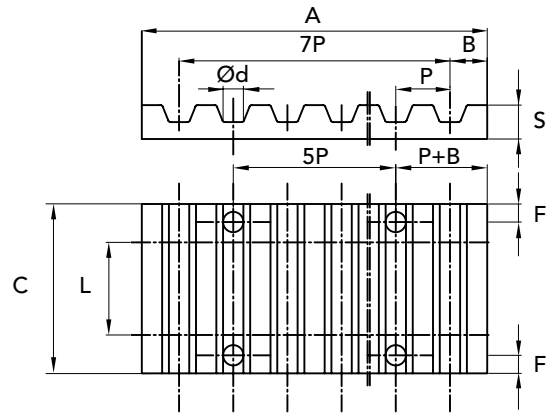
CAD drawings available on our site
www.chiaravalli.com

Quantity, availability and prices
on B2B Chiaravalli



PLATE FOR TIMING BELT METRIC PITCH "T"

PLATE FOR TIMING BELT METRIC PITCH "T"



TYPE	PART NUMBER	P	L	F	d	B	A	S	C	WEIGHT Kg.
T5 10	49340510	5	10	6	5,5	3,2	41,8	8	29	0,02
T5 16	49340516	5	16	6	5,5	3,2	41,8	8	35	0,03
T5 25	49340525	5	25	6	5,5	3,2	41,8	8	44	0,04
T10 16	49341016	10	16	8	9	5	80	15	41	0,11
T10 25	49341025	10	25	8	9	5	80	15	50	0,14
T10 32	49341032	10	32	8	9	5	80	15	57	0,16
T10 50	49341050	10	50	8	9	5	80	15	75	0,22

MATERIAL **ALUMINUM**

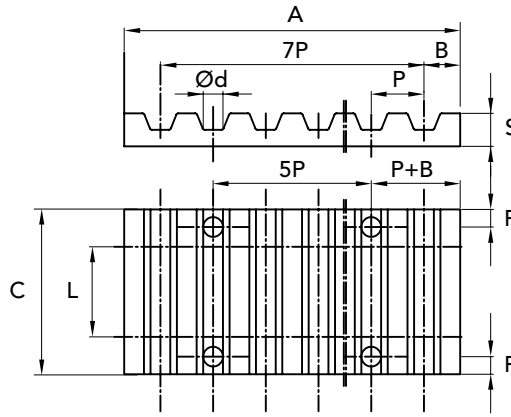


CAD drawings available on our site
www.chiaravalli.com

Quantity, availability and prices
on B2B Chiaravalli

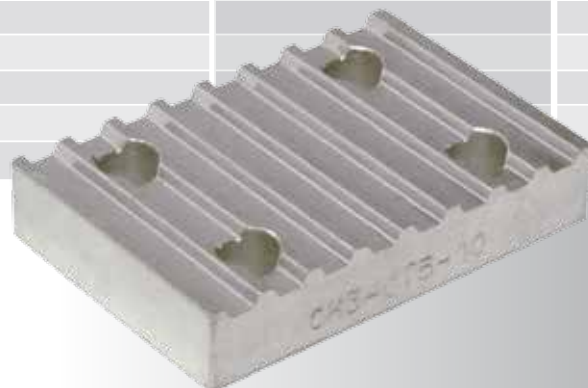


PLATE FOR TIMING BELT METRIC PITCH "AT"



TYPE	PART NUMBER	P	L	F	d	B	A	S	C	WEIGHT Kg.
CT5 10	49346510	5	10	6	5,5	3,2	41,8	8	29	0,02
CT5 16	49346516	5	16	6	5,5	3,2	41,8	8	35	0,03
CT5 25	49346525	5	25	6	5,5	3,2	41,8	8	44	0,04
CT10 16	49347016	10	16	8	9	5	80	15	41	0,11
CT10 25	49347025	10	25	8	9	5	80	15	50	0,14
CT10 32	49347032	10	32	8	9	5	80	15	57	0,16
CT10 50	49347050	10	50	8	9	5	80	15	75	0,22

PLATE FOR TIMING BELT METRIC PITCH "AT"



MATERIAL **ALUMINUM**

CAD drawings available on our site
www.chiaravalli.com

Quantity, availability and prices
on B2B Chiaravalli



WORM SCREW

JACKS

The new line of Worm Screw Jacks named CHT (Chiaravalli High Tech) integrates and completes our range of Mechanical Transmission products.

This new line of products is manufactured using high quality materials, manufactured with absolute precision, making use of the modern machinery fleet of the companies belonging to Chiaravalli Group SpA.

The basic elements that make up the final product "Screw Jack" are made in large series, rigorously checked and put in stock.

Special virtual software developed by Chiaravalli Group SpA enables our customers to first view the various elements of the required screw jack and then, in the second phase, to order it with absolute precision and confidence.

Chiaravalli Group SpA is engaged to ensure the delivery of this product in very short time, with quality and precision.

